

Framingham

*Where there is
always something
to do -
someone to see*



*Discover
Framingham!*

*We may be right
for you!*

Framingham Massachusetts has 67,000 residents and a Town form of government. We boast a strong town manager, 5 elected Selectman, 216 elected Town Meeting members, 5 elected School and Planning Board members.

Hundreds of people volunteer in Framingham running committees, writing reports and building a strong community.

Isn't it time you
"Come Home to Framingham?"

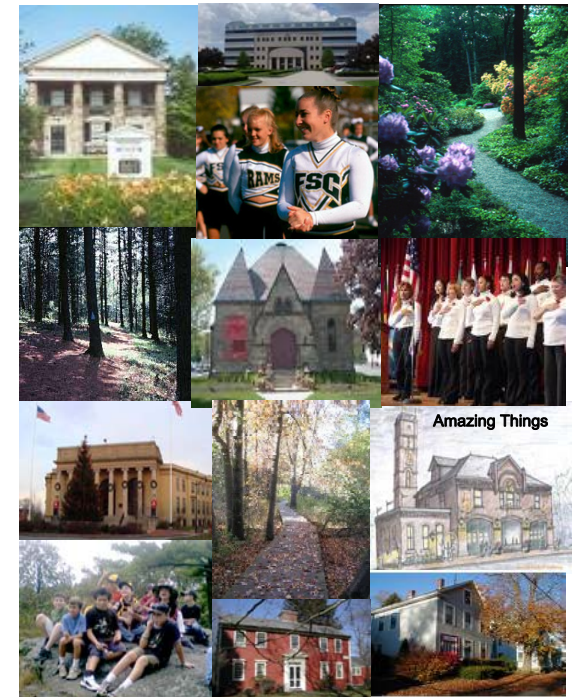


Visit us today at:

<http://www.framinghamma.gov>



Come Home To..



Framingham



Framingham



Country Living

- 3,402 acres of protected open space
- 820 Acre Callahan State Park
- 550 Acre Nobscot Boy Scout reservation
- More than 1600 plants at Garden in the Woods
- Bay Circuit trail
- Tercentennial Park
- Farm Pond
- Sudbury Valley Trustee member
- Working Farms— Eastleigh , Hanson and Stearns Farm—A Community Sponsored Agricultural farm
- Rural neighborhoods



Urban Life

- Rapid transit trains to Boston
- Direct bus to Boston, Amherst and New York
- Multifamily housing
- Artist live/work districts
- Local theatre, shopping and fine dining
- Economic and cultural engine of Metrowest
- Rail Trail
- Spring into Arts partnership

Convenience

- MBTA station to Boston, Worcester and Springfield in downtown Framingham
- Easy Access to Major Highways
 - ⇒ Mass Pike/ Route 90
 - ⇒ Route 495
 - ⇒ Route 128/ Interstate 95
 - ⇒ Route 9, Route 126, Route 135, Route 30 and Route 20
- Major Shopping and Theatre in the Golden Triangle
- 30 minutes to Boston, Logan airport and Worcester
- 90 minutes to Cape Cod and Western Massachusetts

Community

- Residential stability
- The many Villages of Framingham offer neighborhood flavor and distinction
- Involved citizenry
- Town supported activities and services and a new senior center
- Multi cultural fairs, parades and events
- 300 years of Framingham Pride

Exemplary Schools

- Compass school awards given to elementary, middle and high school
- Specialty based school choice for the 8 elementary schools
- 4 middle schools including 1 charter
- Magnet high school with —AP classes, Honors Program, Resiliency for Life, Cheerleading ,Sports, Drama and more
- 2-way bilingual, SAGE and immersion programs recognized by the State
- Home to Framingham State College, Mass Bay College and Clark University
- Over 7 private schools including The Learning Center for the Deaf